

# VIRTUAL LEARNING ENVIRONMENTS

A research-based program to maximize learning in virtual environments through the empowerment of all stakeholders



## Assessing Need and Customizing Learning Program

### DESIGN PLANNING

The PowerUpEDU Professional Learning Team will meet with district leaders to assess current digital learning status, conduct needs assessment, and develop customized plan for program implementation.

## Launching Virtual Learning Environments

### IMPLEMENTATION

PowerUpEDU will deliver live professional learning sessions focused on empowering teachers to leverage digital platforms for remote learning, to apply best practices in distance learning, and to begin a practical approach to implementation.



## Virtual Classrooms as Learning Communities

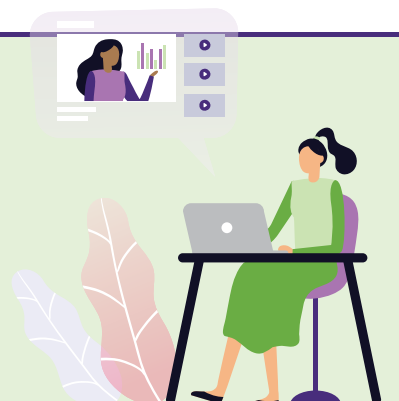
### EXTENDING

The second phase of live professional learning will focus on cultivating student-focused learning communities in virtual learning environments.

## Enriching Virtual Practices

### ENRICHING

In this live session, teachers and leaders will explore ways to enhance formative and summative assessment in virtual environments, will learn how to effectively deliver digital feedback, and will explore how to differentiate instruction virtually.



## Assess Progress and Refine Plan

### REFLECTION

In this stage of program implementation, program data, usage reports, user voice, and stakeholder feedback will be analyzed to assess progress and to develop a plan for continuation of learning services.