



PowerUpEDU

Lü

Interactive
Playground

**Lü empowers
educators to create
magical learning
moments that help
each child reach their
full potential.**

**Our products transform large indoor spaces
into immersive learning environments.**

Through our complete audiovisual infrastructure,
teachers enhance their learning methods, engage
kids to be physically active while learning, and
create magical moments of collaboration.

Learn more. Contact PowerUpEDU.
Click [HERE](#) or moreinfo@powerupedu.com
www.PowerUpEDU.com

Transform your gym into an immersive learning space

We produce state-of-the-art audiovisual systems powered by a wide range of educational applications.

Aside from obvious educational uses, our systems can be used for a variety of purposes, from cinema-quality movie nights to dance parties and professional presentations.

Each Lü system includes a high-definition laser projector, a movement-detecting camera, a powerful sound system, and a fully automated multi-colored lighting system to create magical immersive environments.



Hardware



Software

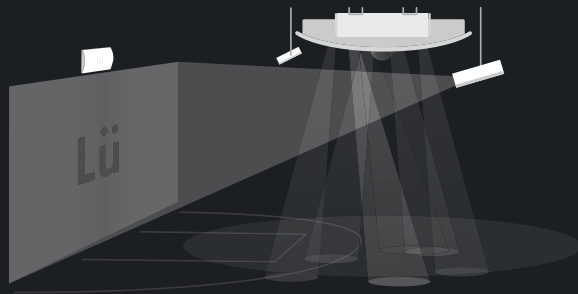


Community

PowerUpEDU Lü

Configurations

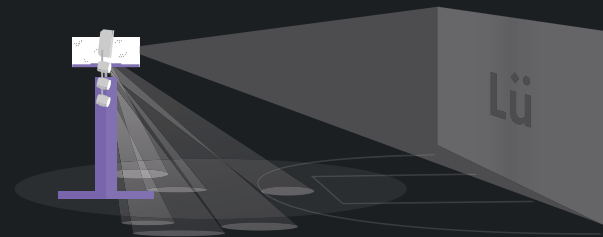
Whether you wish to install your Lü in a gym, a cafeteria, an agora, or a multipurpose room, we will guide you towards the best installation scenario.



ÜNO

Ceiling-mounted wall configuration.

Combine 2 Ünos in a DÜo configuration for a full-scale space made of two interactive walls.



MÖBIL

Moveable single-wall configuration.

Technical information



The wall surface should be painted in matte white for better quality projections.



The screen must be free of obstacles (e.g. basketball nets, clocks, or beams)



The camera detection is sensitive to sunlight shining through windows.

Learn more. Contact PowerUpEDU.
Click [HERE](#) or moreinfo@powerupedu.com

Üno and DÜo systems

Each Lü Üno configuration consists of four pre-assembled modules to be rigged to the ceiling: camera, light and sound, projection, and heart.

Key elements*

5500 lumens HD laser projector	Powerful, high-quality 2400 W dual sound system
Two synchronized movement-detecting cameras	Microphone headset allowing you to broadcast your voice over on the sound system
Automated multicolor LED lighting system with moving lights	Internal computer with device mirroring capability

*The information and specifications provided are subject to change without notice.

Installation specifications

Ceiling-mounted units offer a lot of flexibility, since they can be installed indoors in almost any space.

Make sure your space fits these requirements:

	Minimum	Optimum
Clear wall space	8 ft H x 14 ft W (2.5 m x 4.3 m)	12 ft H x 19 ft W (3.7 m x 6 m)
Ceiling height	10 ft (3 m)	20 ft (3.7 m)
Ceiling weight	99 lbs (45 kg)	175 lbs (80 kg)



Installation requirements



The system requires one (1) dedicated 20 amp electrical breaker through two (2) outlets installed on the ceiling.



A wired Ethernet connection must be installed for the system to work properly.

Learn more. Contact PowerUpEDU.
Click [HERE](#) or moreinfo@powerupedu.com

Möbil system

Bring the experience everywhere

Key elements*

6000 lumens encased laser projector with motorized lens	Powerful, high-quality 900 W dual sound system
Movement-detecting camera for interacting with the projection	Internal computer with device mirroring capability
Six multicolored LED lights to create a fun ambiance	

*The information and specifications provided are subject to change without notice.

Space requirements

The Möbil system can fit pretty much anywhere. You need 30 minutes to set it up and 20 minutes to tear it down.

Make sure your space fits these requirements:

	Minimum	Optimum
Clear wall space	8 ft H x 14 ft W (2.5 m x 4.3 m)	12 ft H x 19 ft W (3.7 m x 6 m)
Ceiling height	10 ft (3 m)	14 ft (3.7 m)



Installation requirements



The system requires one (1) standard electrical outlet.



A Wi-Fi connection must be available for the system to work properly.

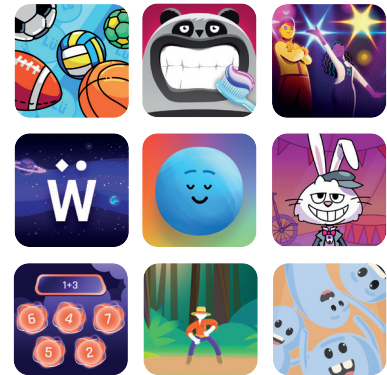
Learn more. Contact PowerUpEDU.
Click [HERE](#) or moreinfo@powerupedu.com
www.PowerUpEDU.com

Our applications

Designed by educators for educators, our systems include a diverse and growing portfolio of 40+ curriculum-based applications covering all subject matters.

Constantly updated and highly customizable to fit the needs of your local curriculum or age group, these activities are carefully crafted to help kids develop their social, emotional, physical, and intellectual skills to the fullest.

play-lu.com/applications



Premium portfolio



Access the ultimate Lü experience and get the most out of your system and the Lü Community

Get unrestricted access to our premium portfolio of Lü+ exclusive applications and get even more applications to keep your kids in a constant state of discovery and amazement.

play-lu.com/lu-plus

Unlock all creation and customization features of the Lü Community to build cross-curriculum content and discover all of Lü+ exclusive features built in to the applications you play.

Lü Community



Lü Community is a peer-based, free and open online platform that allows teachers and other Lü users from across the globe to discover original content created by other Lü enthusiasts.

play-lu.com/community



Discover

Open up your Lü experience to a myriad of new possibilities! Content sharing is entirely optional; it lets users like and duplicate content created by others.



Create

Create your own content and customize existing content to use in a variety of Lü applications on your system. Collaborate with other departments to include cross-curriculum content in your activities and instantly access your content in your Lü system interface.



Share

Share content with the community so other users can instantly access it on their Lü systems. Be part of a new synergy between educators, coaches, and leaders around the world helping kids reach their full potential.

Learn more. Contact PowerUpEDU.
Click [HERE](#) or moreinfo@powerupedu.com
www.PowerUpEDU.com

We're here



Professional development

Lü's network of certified trainers are available across all states and provinces to provide customers with in-depth, on-site professional development sessions to help them make the most of their new systems.



Training

Master Lü system and applications with deep-dive courses from Lü experts. Tune-up sessions are also available on a punctual basis for ongoing training.



Technical support

Lü provides ongoing technical support via phone, email, the support ticket system, and remote monitoring of your system. Users can also find answers to their questions in the knowledge base.



Lü Interactive
Playground

Warranty

All Lü hardware systems are covered by a standard one (1) year parts and labor warranty.

Extended warranties can keep products protected for up to five (5) years.

Individual components' warranty may differ from Lü's global warranty.

Learn more. Contact PowerUpEDU.
Click [HERE](#) or moreinfo@powerupedu.com
www.PowerUpEDU.com

PowerUp EDU

Making a *Difference* in the Classroom
Since 2012



1796	Brosse à dents			Vaccin
1620		Écriture	Langue des signes	
1450				
1498				
-3400				